

IMS Major Release

What's new in IMS version 1.8.0

Faster, smarter and feature packed!

NEW FEATURES:

MAJOR: Brand new Heat Maps 2.0.

HEAT MAPS NOW SUPPORT:

- Selecting heat map squares to view stat data breakdown
- Longer and newly customisable heat map timeframes
- New 'no aggregation' option to display raw data
- Option of disabling large-scale interpolation

MAJOR: Imagery and terrain layers now configurable via the front end for IMS Managers

MAJOR: Added path profiling! Accessible via the measure tool

MAJOR: Radio interfaces are now visible in the new interfaces tab for IP Devices

- Dynamic stats data can now be added to the network view
- Added Asset and IP Device counts to manage page panels
- Significantly improved support for LTE monitoring
- Deleted comments now show the created timestamp if you expand them

CHANGES:

MAJOR: Removed 'poll even when offline' option from IP Devices, and added it to relevant integrations

- Fade hidden assets in the quicklist to make hidden assets more obvious
- Locations no longer interpolate where there's a time difference of 10 minutes or more
- Map Asset colouring dropdown options are now grouped by source stat type

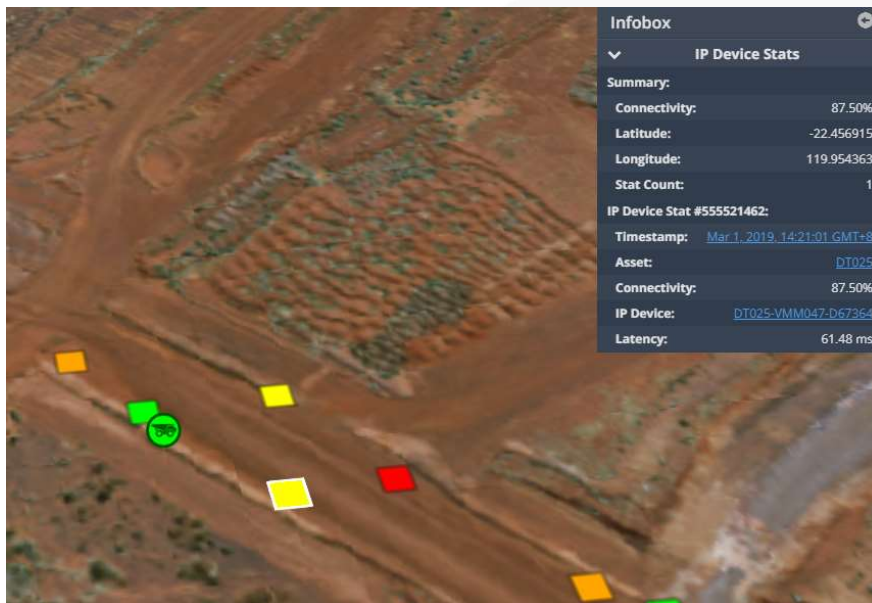
FIXES:

- Fixed jumping to the last tripped trigger stat
- Fixed a bug where map tooltips wouldn't show
- Fixed a config limitation with dynamic stat colours
- Fixed a bug that caused open assets and ip devices to not close when changing site
- Fixed a bug that caused packets to now show in the map bottom draw
- Fixed a minor issue with deleted assets remaining selected when bulk editing
- Fixed a bug that could cause connections to not select properly in the map in rare cases
- Fixed a bug with duplicate IP Device names causing chart items to overlap
- Fixed a bug that caused the infobox to go off-screen horizontally when a large number of assets were selected in the map
- Decreased IMS server disk IO load
- Some backend stability improvements
- Other minor backend performance improvements
- Other minor fixes and tweaks
- Comment counts now properly exclude deleted comments
- Improved aggregate table stability

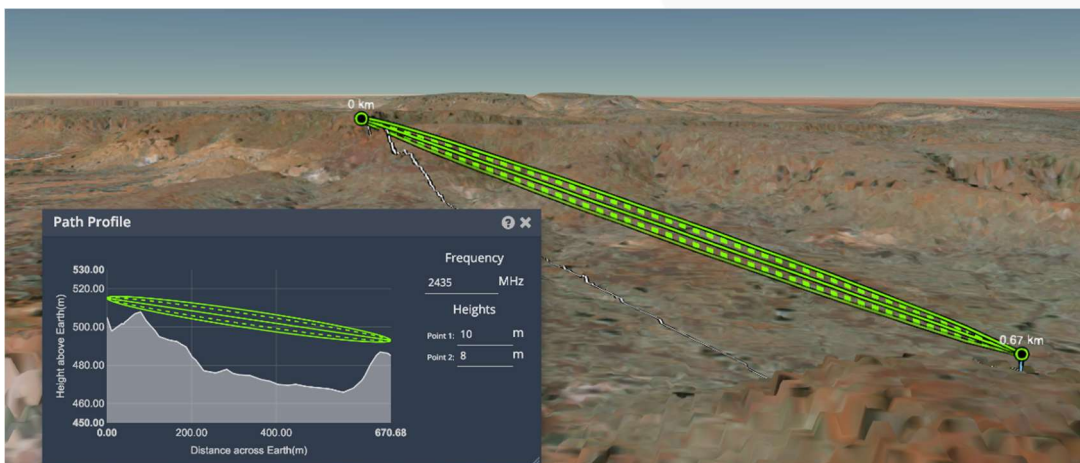
POLLERS:

- Improved 3DP Hornet poller (rate & RSSI specifically) and added channel utilisation
- Added the option of polling channel utilisation to Cisco WLC poller (off by default)
- Fixed inaccurate Cisco WGB poller visible radio Tx rate
- Improved Radwin polling support
- Added support for polling Fluidmesh devices
- Added support for polling AVI devices
- Added support for polling Siklu devices
- Other minor polling bug fixes and improvements

Brand new Heat Maps 2.0



New path profiling tool



Radio interfaces are now visible in the new interfaces tab for IP Devices

<p>Asset — 21800 ⓘ ✕</p> <p>General Comments (1) IP Devices (1) Integrations (0)</p> <p>+ CREATE NEW IP DEVICE</p> <p>21800-VMM045-38998C Motorola AP71xx access point</p>	<p>IP Device — 21800-VMM045-38998C ⓘ ✕</p> <p>General Integrations (0) Comments (0) Interfaces (2)</p> <p>+ CREATE NEW INTERFACE</p> <p>21800-VMM045-38998C:R1</p> <p>21800-VMM045-38998C:R2</p>
<p>Interface — 21800-VMM045-38998C:R1 ⓘ ✕</p> <p>General</p> <p>NOTE: This interface is not editable as it is automatically managed by the IMS backend.</p> <p>NAME 21800-VMM045-38998C:R1</p> <p>MAC fc:0a:81:39:d2:d0</p> <p>✕ CLOSE ✓ SAVE 🔄 SAVE AND CLOSE</p>	<p>Interface — 21800-VMM045-38998C:R2 ⓘ ✕</p> <p>General</p> <p>NOTE: This interface is not editable as it is automatically managed by the IMS backend.</p> <p>NAME 21800-VMM045-38998C:R2</p> <p>MAC fc:0a:81:39:cc:40</p> <p>✕ CLOSE ✓ SAVE 🔄 SAVE AND CLOSE</p>